

GABRIELE SAVERI - ART



Presentation

Sometimes an artist walks on the edge, looking for the precarious balance between the emotions and inner reasoning of man. Gabriele Saveri is a kind painter, smeared with paint which jumps on his work, intoxicated with joy and curious to see its goal.

As an infant experiencing gestures, subtle chromatic passages in tonal passages which express multiple meetings on the various levels of shape and construction.

Research is constant in his work. Restless and unstoppable translates into energetic signs with the aim of wanting to capture the ungraspable and wanting to disembark on the shore of the over and beyond between emotional outbursts and strict order.

The base is defined through the continuous intertwining and superimposing of shapes and intentions, adding lines and nervous and thread-like geometries favouring both rapid and unpredictable movements but always decisive and resolute.

Light is the origin of everything.

Light, in his work, follows, chases, finds and hides.

Its strength reveals the truth of the vision, bent by the painterly gesture in attempting to stop the continuous movement over successive levels.

An ironic attempt to retain the ungraspable ...

Islands

Defining a path is always complex, the idea is born, traced, one tries to follow the line but the desire to maintain the intention over a long period falters and gives ways to unintentional shapes.

The islands are my moments.

The moments in which I devote myself to the canvas, ISLANDted, disconnected where what you create is not a slave to a pre-packaged idea, a requirement but is generated, layer upon layer, gesture after gesture.

The colours reveal themselves while from afar I look at them for hours, days. It's not about the colour association rules, lines or levels. It is being part of a process, little head, all emotion and gut, It is letting yourself get caught up in the process itself. I find it more interesting, the process is a continuous surprise,

It surprises me, intrigues me...

The process is endless ...

2015



ISOLA 07

120x120 cm - Acrilic on canvas



ISOLA 10

120x120 cm - Acrilic on canvas

2015



ISOLA 08

120x120 cm - Acrilic on canvas



ISOLA 09

120x120 cm - Acrilic on canvas

2015



ISOLA 11

120x120 cm - Acrilic on canvas



ISOLA 06

120x120 cm - Acrilic on canvas

2015



ISOLA 02

80x80 cm - Acrilic on canvas



ISOLA 01

80x80 cm - Acrilic on canvas

2015



ISOLA 03

80x80 cm - Acrilic on canvas



ISOLA 04

80x80 cm - Acrilic on canvas

2014



CIME 1

80x50 - Acrilic on canvas



CIME 2

100x60 cm - Acrilic on canvas

2004



ALBA 1

60x40 - Acrilic on pepar



ALBA 2

60x40 - Acrilic on peper

2004



ALBA 3

60x40 - Acrilic on pepar



ALBA 4

60x40 - Acrilic on pepar

2002



DIAGONALE

100x100 - Acrilic on wood with iron



SEQUENZA 1 e SEQUENZA 2
100x90 - Acrilic on wood with iron

2001



SENZA TITOLO

100x50 - Acrilic on canvas



SENZA TITOLO

110x40 cm - Acrilic on canvas

2001



SENZA TITOLO

100x100 - Acrilic on canvas



SOFFIO DI VITA

100x100 cm - Acrilic on canvas

1998



SENZA TITOLO

115x115 cm - Acrilic on canvas



IN 9 Mq

61x115 cm - Acrilic on canvas

1997



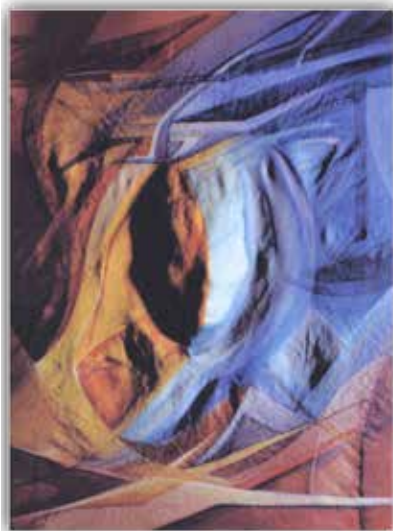
MOVIMENTO 01

113x90 cm - Acrilic on canvas



MOVIMENTO 02

61x115 cm - Acrilic on canvas



I VOLTI DEL MOVIMENTO

42x57,5 cm - Acrilic on canvas

And therefore...

...this is supposed to be a short presentation of the path followed in recent years and its energetic resumption after a long break, where research has never stopped, but has just followed different paths.

The artist has treasured experiences and different artistic languages, returning to composing lines and shapes capable of pulling the observer into a dreamlike dimension, where boundaries dissolve and leave space for colour.

Drawing for Gabriele Saveri is a dynamic meditative exercise and its poetics, also made of narrative cues, illustrates the art of the mandala. As Tibetan practice, his style, characterised by energetic colours and an intense expressiveness, emanates deep vibrations capable of stirring the soul of the observer.

The centripetal force, inherent in every single work, solves the physical separation between the artist's inner world and the outer one of the user, providing a precious opportunity to meet.

The superimposition of shapes on canvas, is nothing more than the mirror of everyday life, where every event is the future of its own origin.



www.gabrielesaveri.com